

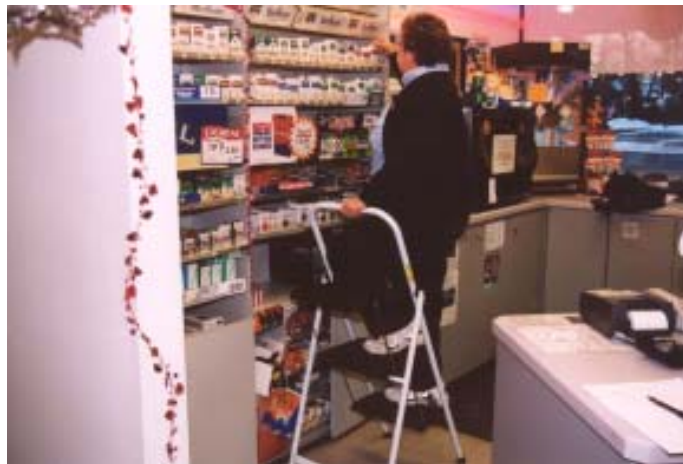
## Current Operation

- Reaching high locations throughout store
- Risk Factors:** 1) Awkward posture  
2) Mechanical stress  
3) Walking/Working surface



When accessing high locations throughout the store to reach cigarettes, the upper cooler shelves, or to fill the ice dispenser; milk crates, chairs, and the shelves themselves are sometimes used to gain added height. These provide unstable working surfaces, and the employees are placed in an awkward posture when reaching for the high items.

## Ideas for Improvement



Step stools for different locations should be provided so there will always be one handy when needed; i.e., register area and cooler area.